

APPLICATION EXAMPLE

LECTURE HALL

APPLICATION

Lecture Hall

OBJECTIVE

To offer an audio system that is clear and intelligible for vocal only applications as well as being able to playback music and film audio with realism and depth.

CUSTOMER REQUIREMENT

- ▶ High quality playback, especially of vocal work
- ▶ Reliable equipment as working time can be up to 8 hours a day
- ▶ Equipment must be mounted off of the floor for cleaning purposes
- ▶ Even distribution of audio to audience
- ▶ Local connection point for single audio source at front.

PRODUCT SOLUTION



6FP100T

4x 6.5" 2-Way loudspeakers



8SM300T

1x Dual 8" subwoofer



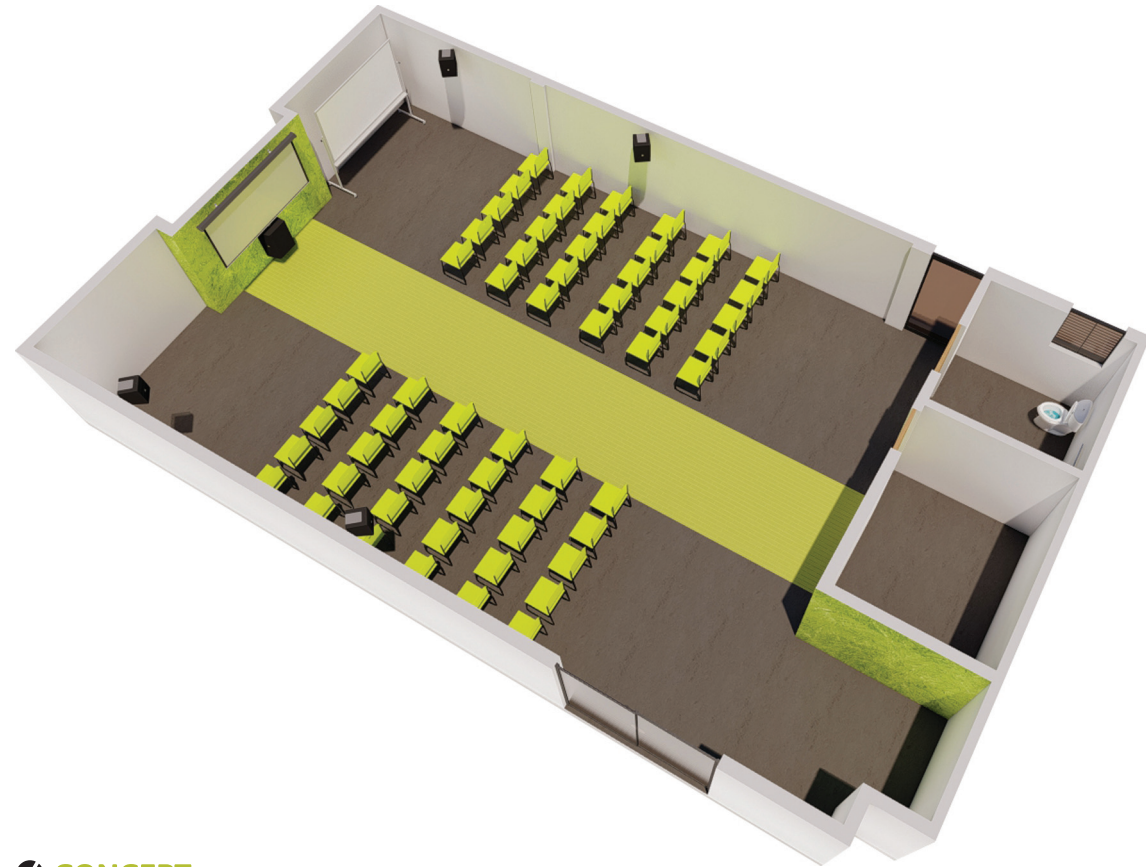
4SDL160

1x 4-Channel amplifier



PAA42

1x Multimedia preamp



CONCEPT

Installed were four 6FP100T's loudspeakers thanks to their compact footprint but large sound. All four loudspeakers were mounted using the optional VESA bracket. A single 8SM-300T provided low end extension particularly useful for music and film playback, and made use of the included wall mount kit meaning the cabinet was fixed above floor level as per install specification. All five loudspeakers were powered by a single 4SDL160 four channel amplifier.

For source and volume control, a single PAA42 media player was utilised alongside the optional VRE11 wall panel. The PAA42 features two microphone inputs allowing a main and guest speaker to present, multiple hardwired audio inputs and wireless audio streaming abilities featuring Linkoustic technology. The VRE11 wall panel was installed at the front of house position via CAT6 cable allowing the guest speaker to select which audio source was live, adjust the volume of said source and also offer a local 3.5mm TRS input for connection to a media device.