

APPLICATION EXAMPLE

WAREHOUSE FACILITY

SUPPORT DATA

APPLICATION

Warehouse Facility


OBJECTIVE


A main priority of vocal announcements and emergency information relay to warehouse operatives, followed by background audio in the warehouse, office and customer showroom.

CUSTOMER REQUIREMENT

- ▶ Clear vocal announcements to warehouse operatives
- ▶ Background audio in working office and customer showroom
- ▶ Microphone for vocal announcements to warehousing staff
- ▶ Must connect to an emergency evacuation system
- ▶ Only suspended loudspeakers within the warehouse

PRODUCT SOLUTION

 **4FW50T**
2x 4" wideband loudspeakers for office area

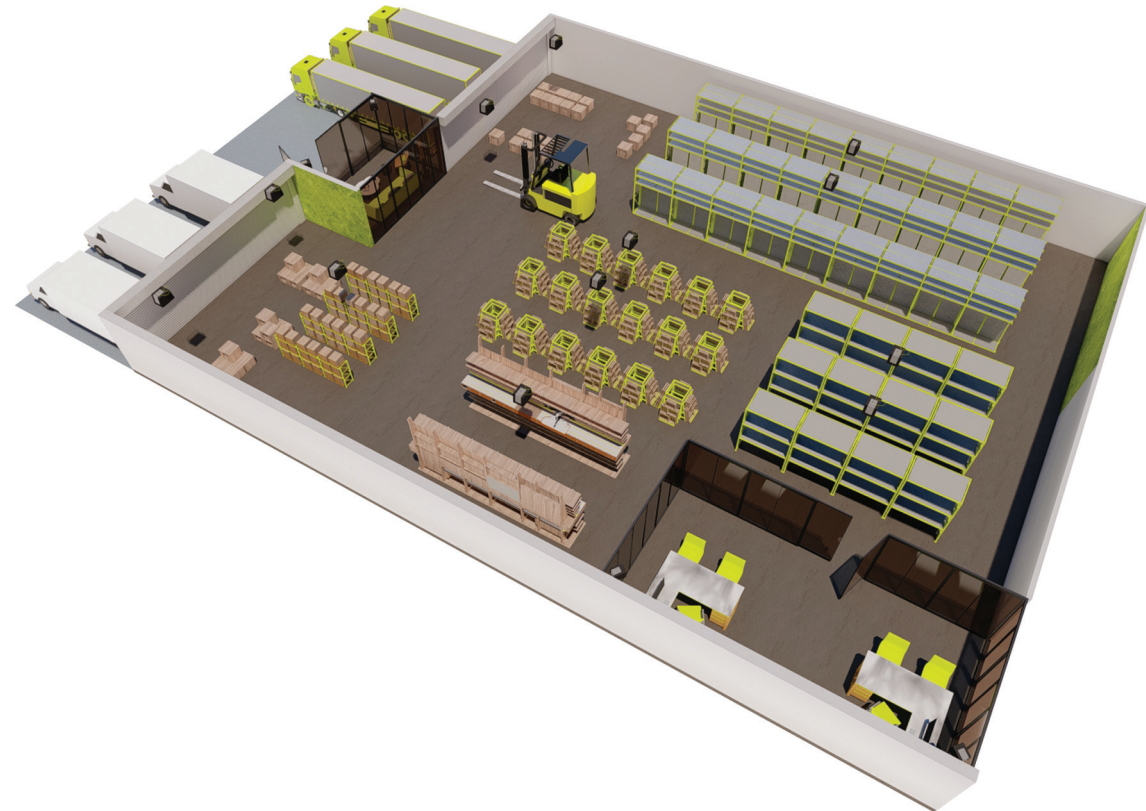
 **6FP100T**
12x 6.5" 2-way loudspeakers for warehouse area

 **2SDL160**
3x 2-Channel amplifier

 **2SDL70**
1x 2-Channel amplifier

 **DLA26**
1x Stereo Splitter

 **PAA42**
1x Multimedia Player



CONCEPT

A total of twelve 6FP100T loudspeakers mounted in a downward firing pendant speaker configuration complying with project specifications. Two 4FW50T loudspeakers are mounted using the optional VESA brackets in both the working office and customer showroom. The warehouse speakers are powered by three 2SDL160 amplifiers which are rack-mounted in the main office; the office and showroom loudspeakers are fed by a single 2SDL70 amplifier in each.

For source replay, a single PAA42 is at the helm offering a multitude of media playback options for staff to choose from. It also provides the emergency features required for the entire audio system and a priority microphone input for live vocal announcements.

Finally, a DLA26 offers simple-to-use audio distribution with three of its six total outputs utilised. Output one feeds the main warehouse and is configured in mono. Outputs two and three control the volume level in the customer showroom and office respectively, leaving room for system growth if necessary.

SUPPORT DATA